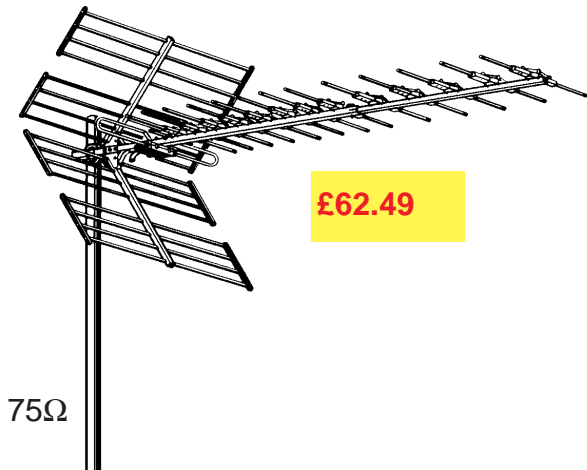


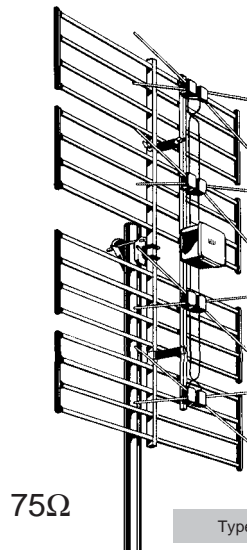
### High Quality UHF Antenna's



**£62.49**

75Ω

Type-No. EZ 44
Polarization Horizontal or vertical. Mast clamp inclinable.
Channels 21- 69
Max. Gain dB 15
Back/front ratio dB 28,0
Half power beam width horiz. 35°
Half power beam width vertical 42°
Wind loading horizontal N 72,6
Wind loading vertical N 114,0
Length mm 1090
Cable connection Ω 75/300
Packing unit 1 piece



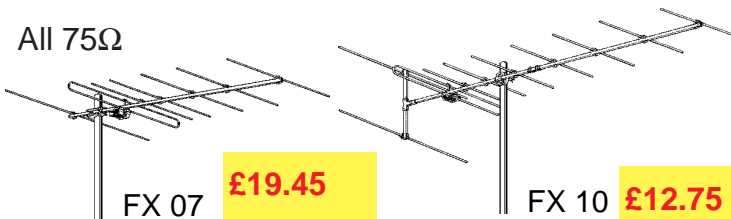
**£25.75**

75Ω

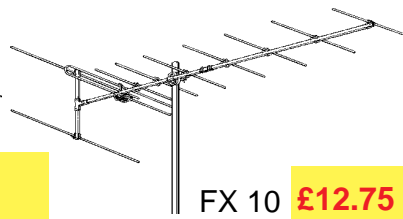
Type-No. EE 04	EE 06
Channels 21-60	21-69
Wind loading horiz./vert. N 105	N107
Depth mm 215	260
Width mm 645	
Polarization Horizontal or vertical.	
Max. Gain dB 13,5	
Back/front ratio dB >20	
Half power beam width horizontal 46°	
Half power beam width vertical 27°	
Height mm 830	
Cable connection Ω 75/300	
Mast clamp inclinable.	
Packing unit 2 pieces	

### DAB and VHF TV Broadcast

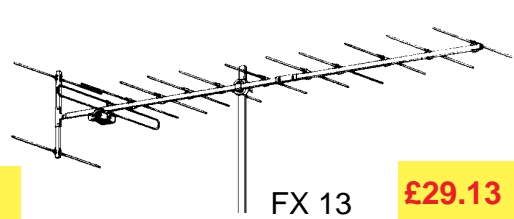
All 75Ω



FX 07 **£19.45**



FX 10 **£12.75**



FX 13 **£29.13**

Type-No.	FX 07	FX 10	FX 13
Channels	E 5 - 12	E 5 - 12	E 5 - 12
Elements	7	10	13
Max. Gain dB	8,3	9,5	10,6
Back/front ratio dB	18 >	20 >	20
Half power beam width horiz.	58°	53°	49°
Half power beam width vertical	78°	67°	57°
Wind loading horizontal	N 28,	5 47	61,8
Length mm	1090	1710	2090
Polarization Horizontal Mast clamp inclinable.			
Cable connection Ω 75/300			
Packing unit 1 piece			

# Directional Antenna

## 470 – 860 MHz

### K 72 23 47, K 72 23 41

# TAYLOR

- Logarithmic-periodic broadband directional antenna in fibreglas radome.
- High side-lobe suppression.

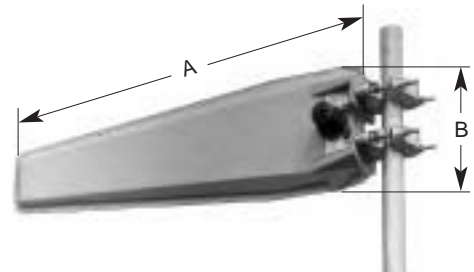
Type No.	K 72 23 47	K 72 23 41
Input	7-16 female	N female
Frequency range	470 – 860 MHz	
VSWR	< 1.25	
Gain (ref. to $\lambda/2$ -dipole)	9 dB at mid-band	
Impedance	50 $\Omega$	
Side-lobe suppression	> 23 dB at 470 – 500 MHz > 25 dB at 500 – 860 MHz	
Polarization	Either horizontal or vertical by repositioning two clamps	
Max. power	30 Watt (higher power upon request)	
Weight	9 kg	
Wind load (at 160 km/h)	For horizontal pol.: frontal/lateral: 63 / 102 N For vertical pol.: frontal/lateral: 63 / 500 N	
Max. wind velocity	For horizontal pol.: 225 km/h For vertical pol.: 180 km/h	
Packing size	1172 x 372 x 224 mm	

- Material:** Radiator: Weather-resistant aluminum.  
Radome: Fibreglass, colour: Grey.  
Mounting kit: Aluminum.  
All screws and nuts: Stainless steel.
- Mounting:** To tubular masts of 48 – 115 mm diameter using supplied clamps.
- Ice protection:** Since radiating system is fully protected by the radome and due to its very sturdy construction, the antenna remains fully operational even under heavy icy conditions.
- Grounding:** Via mounting parts.
- Combinations:** Several antennas can be combined to increase the gain and to produce radiation patterns with very high side-lobe suppressions.

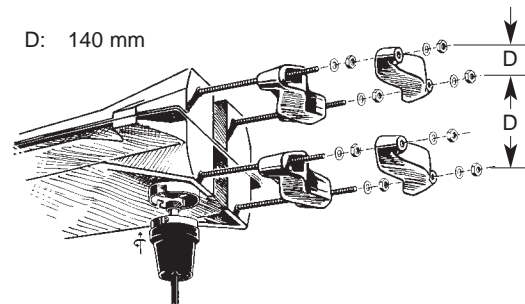


For horizontal polarization

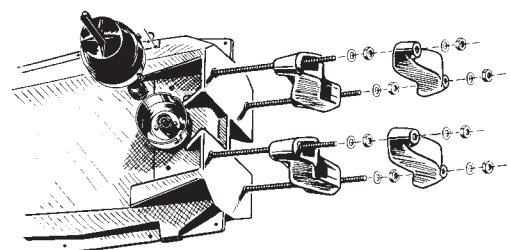
A: 1153 mm  
B: 353 mm  
C: 180 mm



For vertical polarization



For horizontal polarization



For vertical polarization

### Radiation Patterns (at mid-band)

